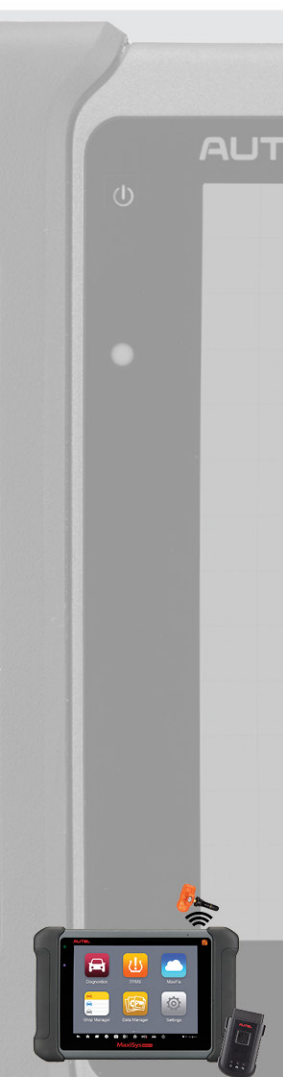


AUTEL[®]

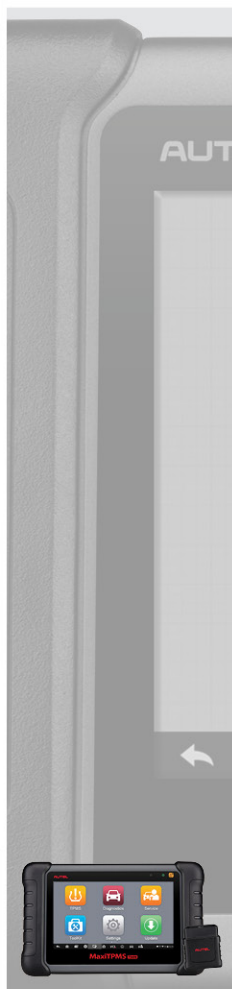
TOOLS CATALOG 2018

WWW.AUTEL.COM



MAXISYS

PG.2-15



MaxiTPMS

PG.16-17



MaxiCheck

PG.18-21



AutoLink

PG.22-25



MaxiVideo

PG.26-27

MAXISYS CV

COMMERCIAL VEHICLE ADVANCED DIAGNOSTICS

Built on the MaxiSYS Android-based platform, the MaxiSYS CV provides OE-level bi-directional capabilities for all makes & models in Class 1 (0-6,000lbs) thru Class 9 (33,000lbs) vehicles. All MaxiSYS tools provide the AutoSCAN feature to quickly scan and provide a single screen display of all systems, detail fault codes, options to view graphed and live data, then review detailed repair instructions to complete your repairs easily.

ALL MAKES / ALL MODELS

CLASS 1 (0-6,000 LBS) – CLASS 9 (33,000 LBS)



Single Screen
Quick Scan
Fault Codes &
Repair Details

Advanced Functions
& Active Tests
For Specialized
Components

J2534 MAXIFLASH ELITE

BLUETOOTH VCI

Advanced Coding &
Parameter Settings

CAN-Based Protocols
J1939 - J2284

OBDII-Based Protocol
J1708

PROGRAMMING

Pass-Thru Device
For Reprogramming

CAN-Based Protocol
ISO15765 - ISO9141

GM (VPW) Protocol
J1850

MF2534



REPAIR FASTER

- Quick Access AutoSCAN Read & Clear Codes
- DPF Reset and Regeneration / Set Parameters
- Full Bi-Directional Controls
- Full Brake and Transmission Coverage
- Injector Coding, Cylinder Power Balancing,

WIRELESS



WORK SMARTER

- MaxiFIX Diagnostic Repairs Database
- Shop Manager / Data Manager / Printer Setup
- Remote Technical Support / Data Logging
- 1 Year FREE Software / Vehicle Coverage
- Tool Functions After Subscription Ends

ANDROID 4.0



SUPERIOR DIAGNOSTICS

FREEZE FRAME DATA

Freeze frame data		
DTC code	0649	
Aftertreatment SCR intake temperature	0.0	°C
Aftertreatment SCR outlet temperature	-0.0	°C
Aftertreatment diesel exhaust fluid tank temperature	0.00	°C
Alternate low idle switch mux address	8	
Barometric air pressure	101.9	kPa

View a snapshot of all system statuses at the exact moment an error code is registered by the ECU.

LIVE DATA GRAPHING



Easy to read and compare, multi-system vehicle analysis in real time.

SPECIAL FUNCTIONS

MS908CV special functions diagnose manufacturer-specific systems including Allison transmissions, Bendix ABS Brake systems, Detroit Diesel Engines and Eaton and Wabash ABS trailer brakes.

- Fuel Pressure Adaptation Reset
- Injector CEOM Reset
- O2 Sensor Calibration
- Injection Quantity Adjustment
- DSI System De-Aeration
- MAF Sensor Calibration
- Monitor Throttle Position Sensor
- Parameter Setting
- Rack Sensor Calibration
- Timing Calibration
- DOC/DPF Reset & Regeneration
- Aftertreatment Maintenance Filter Installation
- Aftertreatment Particulate Matter Sensor Regeneration
- Aftertreatment SCR Catalyst Cold Soak Override
- Aftertreatment SCR System Health Monitor
- Extended Service Coverage
- Injector Trim Calibration
- Maintenance Monitor
- Plus Many More Diagnostic Test Options and Calibrations...

CLASS 1 - CLASS 9 COMMERCIAL VEHICLES

10 INCH SCREEN



MAXISYS CV

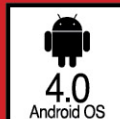
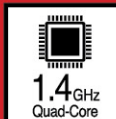
- AUTOVIN / AUTOSCAN DETECTION
- ACCESS REPAIR RECORDS & TEST DATA
- MFG. CUST. J1939/J1708 PROTOCOLS
- RESET DIESEL EMISSIONS
- 9 SERVICE RESET FEATURES
- ACCESS ALL MODULES IN ALL SYSTEMS
- BI-DIRECTIONAL CONTROL
- ADVANCED CODING & ADAPTATIONS



\$3995.00

NEW DEUTSCH CONNECTORS & PROBE SET

COVERS LIGHT DUTY, MEDIUM DUTY, HEAVY DUTY COMMERCIAL VEHICLES (1996 TO PRESENT)



1 YEAR WARRANTY / 1 YEAR FREE SOFTWARE UPDATES

ALL TOOLS MUST BE REGISTERED AND UPDATED UPON PURCHASE TO BE GUARANTEED LATEST COVERAGE
AUTEL.COM UPDATES PROVIDES THE LATEST VEHICLE COVERAGE AND DIAGNOSTIC CAPABILITIES

MAXISYS ADAS

COMPREHENSIVE ADAS CALIBRATION

The powerful Autel MaxiSYS ADAS has evolved beyond the original diagnostic capabilities to offer comprehensive and precise Advanced Driver-Assistance Systems (ADAS) calibration.

- Adaptive Cruise Control (ACC)
- Lane Departure Warning (LDW)
- Night Vision System (NVS)
- Rear Collision Warning (RCW)
- Around View Monitoring (AVM)
- Blind Spot Detection (BSD)



VEHICLE COVERAGE

MaxiSYS ADAS utilizes one test frame for six systems of calibration (ACC, LDW, BSD, NVS, AVM, and RCW), to cover eleven manufactures: VW, Mercedes, BMW, Lexus, Nissan, Infiniti, Honda, Toyota, Hyundai KIA, Ford and Volvo. Different auxiliary tools such as the reflector, night vision device, and Doppler signal reflector are easily attached to the sliding panel on the crossbar. Pattern panels are easily adapted for multiple vehicles.

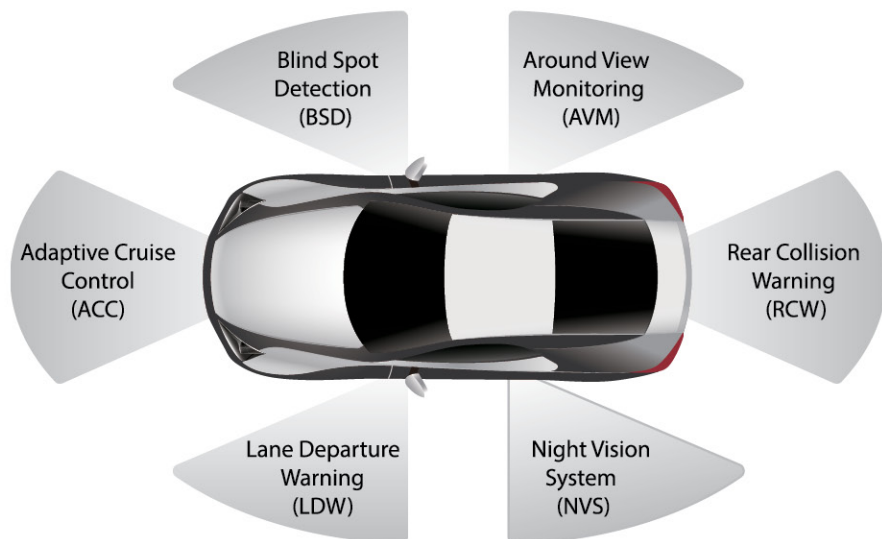
ADAS TABLET

The 1.3GHz + 1.7GHz hexa-core processor and easy-to-use Android navigation inherited from the MaxiSYS family, guides technicians to quickly complete calibration procedures with step-by-step graphic illustrations. Combined with OE-level diagnostic coverage, MaxiSYS ADAS is a modular system providing new calibrations to be added at any time, enabling a custom tailored system for your needs.



COMPLETE ADAS SOLUTION

MaxiSYS ADAS is ideal for glass replacement business, independent garages and body shops by enabling new repair capabilities to operate more profitably. Compatible with a wide range of camera and radar-based driver assist systems, the MaxiSYS ADAS provides modular OE-level diagnostics and calibration that are easily combined based on your repair needs.



(ACC)

ADAPTIVE CRUISE CONTROL

Control system to automatically adjust vehicle speed to maintain a safe distance from vehicles ahead. Control is based on sensor information from on-board sensors.



(LDW)

LANE DEPARTURE WARNING

Warns driver when vehicle begins to move out of freeway lane. Designed to minimize causes collisions: driver error, distractions and drowsiness.



(NVS)

NIGHT VISION SYSTEM

Uses a thermographic camera to increase a driver's perception and seeing distance in darkness or poor weather beyond the reach of the vehicle's headlights.



(RCW)

REAR COLLISION WARNING

Braking at standstill to avoid rear-end collisions. Alert when engine started and cannot turn off. Warn driver of vehicle approach from behind by rapid signal flash.



(AVM)

AROUND VIEW MONITORING

Provides a virtual 360-degree scene of the car in bird's-eye view. It assists drivers to park more easily by better understanding the vehicle's surroundings.



(BSD)

BLIND SPOT DETECTION

Vehicle-based sensor function that detects other vehicles located to the driver's side and vehicle rear, then post a proximity warning.

THE MAXISYS ADAS KIT

ADAS patterns are organized by vehicle make to allow shops to order tailored packages based on repair requirements.

- VAG-LDW (CSC0601/01)
- BENZ-LDW (CSC0601/02)
- Nissan/Honda-LDW Type 1 (CSC0601/03)
- Honda-LDW Type 2 (CSC0601/05)
- Nissan-LDW Type 2 (CSC0601/06)
- Hyundai-LDW (CSC0601/07)
- Toyota/Lexus-LDW (CSC0601/11)
- VAG- AVM (CSC1004/01)
- Honda-AVM (CSC1004/03)
- BENZ-RCW (CSC1006/01)
- VAG-RCW (CSC0806/01)
- Nissan-RCW (CSC1006/05)

MAXISYS ELITE

ADVANCED ANALYSIS DIAGNOSTIC SYSTEM

The MaxiSYS® Elite Android operating system is powered by Autel's quad-core processor to quickly perform every job from comprehensive vehicle diagnostics & analysis to advanced ECU programming. The larger battery size and included docking station provide convenient charging with intelligent power saving to eliminate charging concerns. The Elite comes with 2 Years of FREE software updates and a 2-Year warranty to provide complete coverage.

**FREE MINI
BLUETOOTH VCI**



POWERFULL HARDWARE

The MaxiSys® Elite sets a new standard in diagnostic scan tools providing unsurpassed speed and reliability. The quad core 1.8 GHz processor paired with a 32 GB solid state hard drive makes the Elite faster than any comparable device. Quicker tool access, allows technicians to quickly pinpoint vehicle faults and perform OE-level diagnostics with greater ease.

EFFICIENT SOFTWARE

The MaxiSys® Elite mobile powerhouse offers the fastest WiFi and Bluetooth protocols to make this the ideal, shop-friendly diagnostic scan tool. Quicker tool connections, enable technicians to quickly perform Auto-Vin Scans, ECU Coding and Flash programming with greater speed.

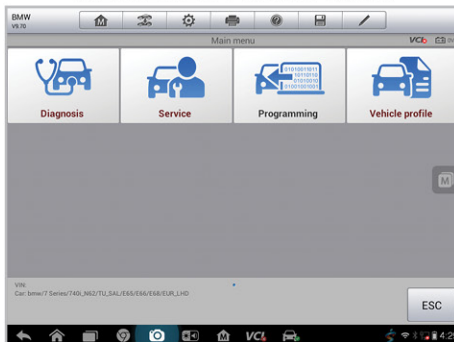
SUPERIOR PRODUCT

SYSTEM COVERAGE



The most extensive system coverage for than 80 US domestic, Asian and European makes and models.

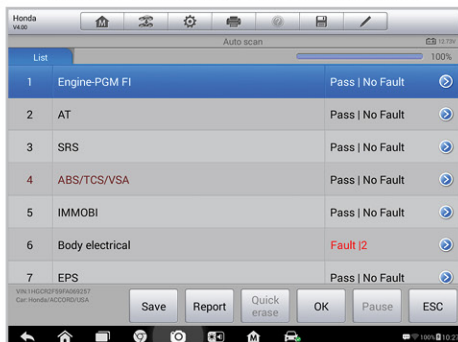
OE LEVEL FUNCTIONS



Comprehensive OE-Level diagnostics & OBDII services. Advanced ECU coding and programming for pro tools.

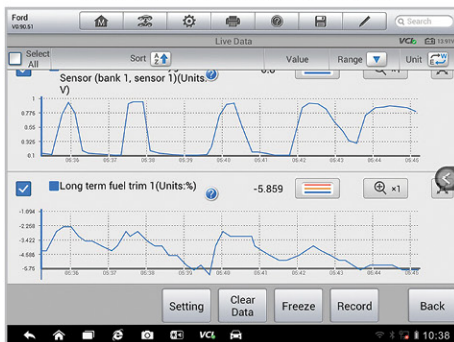
EXCEPTIONAL FUNCTIONALITY

OBDII DIAGNOSTIC CODES



Comprehensive vehicle diagnostics and analysis, live data, actuation tests, adaptations and ECU information.

FREEZE FRAME DATA



Display DTC description and data values associated with the specific DTC at the moment it occurred.

PERFORMS STANDARD PASS-THRU PROGRAMMING

10 INCH SCREEN



MAXISYS ELITE

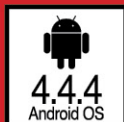
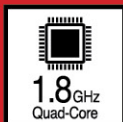
- AUTOVIN / AUTOSCAN DETECTION
- ACCESS REPAIR RECORDS & TEST DATA
- KEY PROGRAMMING DOMESTIC & ASIAN 1996+
- RESET DIESEL EMISSIONS LIGHT/MED. DUTY
- SERVICE RESET FEATURES
- ACCESS ALL MODULES IN ALL SYSTEMS
- B-DIRECTIONAL CONTROL
- ADVANCED CODING & ADAPTATIONS

\$3995.00



ADDITIONAL 1YEAR TOTAL CARE PACKAGE (TCP) AVAILABLE FOR \$1,295.00

COVERS US, ASIAN AND EUROPEAN VEHICLES (1996 TO PRESENT) INCLUDING SUPERCARS



2 YEAR WARRANTY / 2 YEARS FREE SOFTWARE UPDATES

MAXISYS

COMPLETE DIAGNOSTIC SYSTEM

The MaxiSYS and MaxiSYS Pro diagnostic packages provide OE-level coverage for professional technicians who demand superior tool features and performance for their investment. MaxiSYS tools offer double the speed with A9 quad-core 1.4GHz processors and faster navigation with the Android Operating System. MaxiSYS delivers smart technology for smarter repair diagnostics.



MAXISYS - MS908

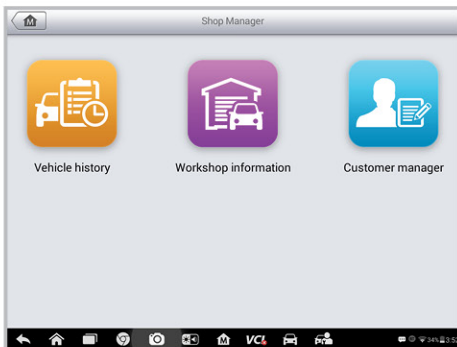
Developed with the highest level of software DNA to define Autel's complete diagnostics. With a large 9.7" LED capacitive touch screen and higher level of powerful hardware performance, the MaxiSYS has evolved far beyond our first generation tool capabilities to offer complete diagnostic solutions for smarter repairs. Able to utilize the same MaxiVIDEO and MaxiSCOPE optional accessories, the MaxiSYS is the ideal solution to manage your smarter repair jobs with one ultra mobile and wireless tool.

MAXISYS PRO - MS908P

The MaxiSYS Pro was developed for customers looking for the same powerful level diagnostic performance and extensive OE-level functions as the MaxiSYS, with the additional programming features of a J2534 pass-thru programming device. The Autel J2534 also performs as a bluetooth VCI to offer the same quick vehicle connection.

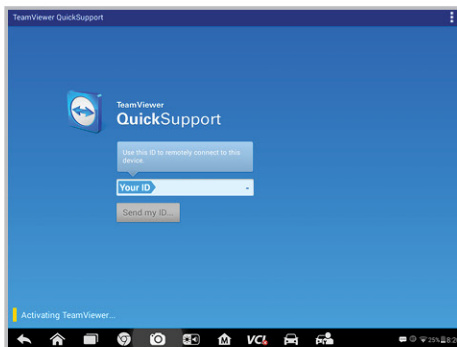
SMARTER DIAGNOSTICS

SHOP MANAGER



Easily organize repair information to streamline communication between multiple technicians.

ON-TOOL TECH SUPPORT



Utilize the convenient TeamViewer application to remotely access realtime support.

AUTEL[®] MAXISYS[™]

FEATURES COMPARISON CHART

PERFORMS STANDARD PASS-THRU PROGRAMMING

10 INCH SCREEN



MAXISYS PRO - MS908P

- AUTOVIN / AUTOSCAN DETECTION
- ACCESS REPAIR RECORDS & TEST DATA
- KEY PROGRAMMING DOMESTIC & ASIAN 1996+
- RESET DIESEL EMISSIONS LIGHT/MED. DUTY
- SERVICE RESET FEATURES
- ACCESS ALL MODULES IN ALL SYSTEMS
- BI-DIRECTIONAL CONTROL
- ADVANCED CODING & ADAPTATIONS

\$3795.00



ADDITIONAL 1YEAR TOTAL CARE PACKAGE (TCP) AVAILABLE FOR \$1,295.00

10 INCH SCREEN



MAXISYS - MS908

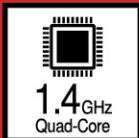
- AUTOVIN / AUTOSCAN DETECTION
- ACCESS REPAIR RECORDS & TEST DATA
- KEY PROGRAMMING DOMESTIC & ASIAN 1996+
- RESET DIESEL EMISSIONS LIGHT/MED. DUTY
- SERVICE RESET FEATURES
- ACCESS ALL MODULES IN ALL SYSTEMS
- BI-DIRECTIONAL CONTROL
- ADVANCED CODING & ADAPTATIONS

\$2995.00



ADDITIONAL 1YEAR TOTAL CARE PACKAGE (TCP) AVAILABLE FOR \$895.00

COVERS US, ASIAN AND EUROPEAN VEHICLES (1996 TO PRESENT) INCLUDING SUPERCARS



1 YEAR WARRANTY / 1 YEAR FREE SOFTWARE UPDATES

AUTEL.COM UPDATES PROVIDES THE LATEST VEHICLE COVERAGE AND DIAGNOSTIC CAPABILITIES

MAXISYS MS906

AFFORDABLE DIAGNOSTIC SCAN TABLETS

More affordable than all predecessor eight inch scan tablets, the MaxiSYS MS906TS and MS906BT provide powerful diagnostic features for technicians who demand the most cost effective performance for their investment. These newest generation MaxiSYS tools utilize 1.3GHz + 1.7GHz processors and are equipped with faster android based software to offer extensive OE-level vehicle coverage.



MOST AFFORDABLE

MaxiSYS MS906BT combines powerful software with affordable wireless hardware for price conscious technicians that want the most tool performance for their investment. MaxiSYS provides a cost effective solution for shop information organization and repair diagnostics management.

TPMS & DIAGNOSTICS

MaxiSYS MS906TS provides the same features as MS906BT and is an industry first combining advanced diagnostics with complete TPMS functionality. Now technicians don't need a secondary TPMS device to trigger, program, or relearn Autel MX-Sensors and quickly test all vehicle systems with one ultra-fast, lightweight, wireless, touch screen tablet.

AUTEL[®] MAXISYS[™]

FEATURES COMPARISON CHART

BUILT-IN COMPLETE TPMS FUNCTIONALITY

8 INCH SCREEN



MAXISYS - MS906TS

TPMS

- READ / ACTIVATE / RELEARN PROCEDURES
- 4 MX-SENSOR PROGRAMMING OPTIONS
- ENHANCED TPMS STATUS SCREEN
- DETECT & DISPLAY TPMS SYSTEM FAULTS
- READ / CLEAR OBDII CODES / SENSOR INFO
- ADJUST TIRE SIZE PLACARD VALUES

DIAGNOSTICS

- AUTOVIN / AUTOSCAN DETECTION
- ACCESS REPAIR RECORDS & TEST DATA
- KEY PROGRAMMING DOMESTIC & ASIAN 1996+
- RESET DIESEL EMISSIONS LIGHT/MED. DUTY
- SERVICE RESET FEATURES
- ACCESS ALL MODULES IN ALL SYSTEMS
- BI-DIRECTIONAL CONTROL
- ADVANCED CODING & ADAPTATIONS



\$2195.00

WIRELESS BLUETOOTH OBDII CONNECTOR

8 INCH SCREEN



MAXISYS - MS906BT

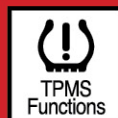
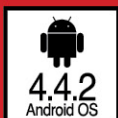
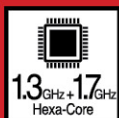
- AUTOVIN / AUTOSCAN DETECTION
- ACCESS REPAIR RECORDS & TEST DATA
- KEY PROGRAMMING DOMESTIC & ASIAN 1996+
- RESET DIESEL EMISSIONS LIGHT/MED. DUTY
- SERVICE RESET FEATURES
- ACCESS ALL MODULES IN ALL SYSTEMS
- BI-DIRECTIONAL CONTROL
- ADVANCED CODING & ADAPTATIONS



\$1695.95

WIRELESS BLUETOOTH OBDII CONNECTOR

COVERS DOMESTIC, ASIAN AND EUROPEAN VEHICLES (1996 TO PRESENT)



MS906TS ONLY

OPTIONAL COMPATIBLE ACCESSORIES

MAXIVIDEO - MV105

- PAIR WITH AUTEL MS906TS
- 5.5MM DIAMETER HEAD
- 320 X 540 PIXEL RESOLUTION
- LED LIGHT INSPECTION AREA
- WATERPROOF USB CABLE
- FLEXIBLE CABLE REACHES 1M
- VIEWING DISTANCE 1" TO 14"



MAXITPMS - TS408

- PAIR THE AUTEL MS906 WITH THE AUTEL TS408
- TO ACTIVATE SENSORS, RETRIEVE TPMS DATA AND PROGRAM AUTEL MX-SENSORS
- FREE SOFTWARE UPDATES



MAXISCOPE - MP408

- PAIR WITH AUTEL MS906TS
- DIGITAL OSCILLOSCOPE
- 4-CHANNEL CONTROL PANEL
- 5 FT. USB CABLE
- TWO ATTENUATORS
- MULTIMETER & ACUPUNCTURE PROBE SETS INCLUDED

1 YEAR WARRANTY / 1 YEAR FREE SOFTWARE UPDATES

AUTEL.COM UPDATES PROVIDE THE LATEST TPMS DIAGNOSTIC COVERAGE, OE LEARNING PROCEDURES AND THE ABILITY TO CLONE AND PROGRAM AUTEL MX-SENSORS

MAXISYS

THE SYSTEM BEHIND MAXISYS

Your MaxiSYS software system comes installed with the MaxiSYS suite of applications. These apps are designed to provide techs with superior data organization and diagnostic support technology. Autel combines modern innovation and support technology to offer the latest software breakthroughs.

POWERFUL HARDWARE



MaxiSYS is the quickest diagnostic tool on the market, utilizing a larger processor and the fastest communication protocols. Featuring intelligent power saving for extended battery life.

BLUETOOTH OBDII VCI



Enhanced wireless connectivity between scan tool and Vehicle Communication Interface (VCI) device, allowing greater mobility to complete repairs quickly and easily.

PRINTER SETUP



Prints recorded data anytime and anywhere. Print from the tablet scan tool via a Windows PC after installing PC Suite software.

MAXICLOUD



The industry's first cloud-based online community puts you in touch with the latest tips and expertise from technicians around the world. It also saves customer and vehicle records, scanner data, and technician notes which are available on demand 24/7.



ANDROID SOFTWARE



MaxiSYS multitasking Android Operating System combined with OE-level diagnostic coverage. AutoVIN technology provides fast and precise vehicle identification. VCI automatically connects with tool via Bluetooth.

MAXIFIX



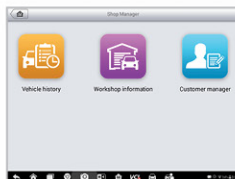
Cloud-based MaxiFIX provides a network platform to communicate with other professional technicians and provides access to a large database of repairs, diagnostic tips and procedures.



SHOP MANAGER



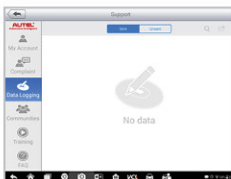
Single organization to multi-task manage workshop operations. Designed to keep all project data files, customer information and vehicle ID and project records.



DATA LOGGING



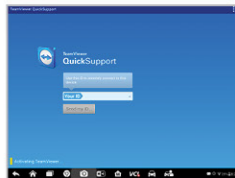
Interactive recording sessions save project data issues and enable direct contact with Autel tech support for first-hand troubleshooting of diagnostic bugs and errors.



REMOTE SUPPORT



Tech support can remotely log into the device and walk you through complicated vehicle diagnostics. This real-time support provides quick and accurate solutions with a simple transfer of data logs from your device.

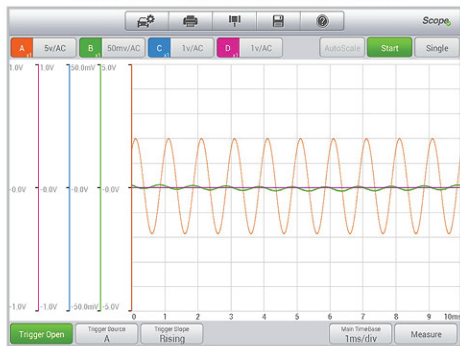


PRINT SCAN REPORTS

Now you have all the functions you need to preform pre and post scan reports after scanning all modules, then easily print and show the customer or submit to the insurance carrier for project approval.

OPTIONAL ACCESSORIES

MAXISCOPE SERVICES



Read and display electronic component test signals in high resolution, clear and simple color waveforms.

MAXIVIDEO SERVICES



Inspect small confined areas with a bright LED, then store and print high resolution images (still and video)

MAXISCOPE OSCILLOSCOPE

This 4 channel digital oscilloscope adds new compact scan functions to the powerful MaxiSYS diagnostics. MaxiSCOPE allows you to measure and test all modern vehicle electrical and electronic components and circuits. Featuring a high speed sampling rate from 80MS/s to 20MS/s and incredible bandwidth of 20MHz, MaxiSCOPE makes viewing waveforms on your high resolution color screen scan tablet screen clear and simple.

FEATURES



- One-click auto setup of voltage scale and time base
- Works on all advanced sensors and circuits including LIN, CAN and FlexRay data bus systems
- Reads and displays electrical signals in waveforms
- Allows manual editing of measurement parameter display
- Records and plays back waveform data
- Color coded 4-channel control panel
- Intuitive UI design features easy trigger point adjustment and real time scale information display
- USB connection power supply
- Free software updates
- Portable and strong housing with protective rubber boot

SPECIFICATIONS



VERTICAL RESOLUTION	12 bits
BANDWIDTH	20MHz
ACCURACY	1%
PC INTERFACE	USB 2.0
POWER	USB Port
WARRANTY	1 Year
SENSITIVITY	10mV/div to 20V/div
INPUT RANGES (FULL SCALE)	±50mV to ±100V in 11 ranges

MP408



MAXISYS SUPPORT

INCLUDED WARRANTY / TOTAL CARE PROGRAM (TCP)



TCP program is now only available for MaxiSYS tools, all other Autel tools currently offer FREE software updates.

WARRANTY

All MaxiSYS tools include one year of hardware warranty and one year of free software updates after tool purchase and registration. After the initial year expires, the customer may purchase an additional one year Total Care Program (TCP) subscription / update card to extend tool warranty and software coverage.

TCP EXTENDED WARRANTY

Purchasing the TCP extended warranty for your registered tool provides several benefits

- One-year hardware Limited Warranty extension
 - Discounted service fee for battery replacement / head unit (tablet) replacement
 - Limited Warranty covers device failure. It does not cover damage caused by user misuse or mishandling. (Refer to the Limited Warranty page for details on Autel standard warranty policy.)
- One-year subscription to download free tool software updates
 - Coverage for all vehicles - extended coverage for older vehicles / updated coverage for newer vehicles
 - Newest tool software - current tool functionality and updated diagnostic features for proper testing
- Dedicated customer support from our ASE-Certified Technical Support staff.
 - Provides support for all questions regarding Autel tools and their use within coverage.
 - Provides an Autel issued Return Goods Authorization (RGA) for defective or malfunctioning tool.

TCP PRICING: (MSRP-US\$)

MaxiCheck MX808	\$ 124.50 (online only)
MaxiTPMS TS608	\$ 295.00 (online only)
MaxiSYS MS906	\$ 495.00
MaxiSYS MS906TS	\$ 795.00
MaxiSYS MS908	\$ 895.00
MaxiSYS MS908 Pro	\$ 1,295.00
MaxiSYS MS908CV	\$ 1,295.00
MaxiSYS ELITE	\$ 1,295.00

REPLACEMENT COSTS: (MSRP-US\$)

TOOL	HEAD REPLACEMENT		BATTERY REPLACEMENT	
	TCP Coverage	Out of Warranty	TCP Coverage	Out of Warranty
MaxiCheck MX808	NA	NA	NA	NA
MaxiTPMS TS608	NA	NA	NA	NA
MaxiSYS MS906	\$ 250.00	\$ 495.00	NA	NA
MaxiSYS MS906TS	\$ 250.00	\$ 495.00	\$ 50	\$ 200.00
MaxiSYS MS908	\$ 250.00	\$ 495.00	\$ 50	\$ 200.00
MaxiSYS MS908 Pro	\$ 495.00	\$ 895.00	\$ 50	\$ 200.00
MaxiSYS MS908CV	\$ 495.00	\$ 895.00	\$ 50	\$ 200.00
MaxiSYS ELITE	\$ 495.00	\$ 895.00	\$ 50	\$ 200.00

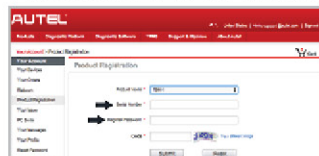
SYSTEM UPDATES

TOOL REGISTRATION AND UPDATE INSTRUCTIONS

We highly recommend you update your scan tools before every project to ensure the most current vehicle coverage. All MaxiSYS tools must be registered to download software updates. You must be a registered Autel user to register a tool. To register a FREE Autel user ID, log into pro.auteltech.com and click on **Create an Autel ID**, then follow the registration procedures to register all your tools under one user ID.

REGISTER YOUR TOOL

PRO.AUTELTECH.COM



Sign into your Autel user ID to check tool status. If registered and within subscription, proceed with updates.

REGISTER TOOL

Click on **Product Registration**, select the tool to register from the drop-down menu, enter the Serial Number and Password then click Submit. Locate the serial number and password by turning on your tool. Press the MaxiSYS icon, then press the Settings icon. Under **About**, locate the unit's serial number and password.

REGISTER TCP

If the tool's software has expired, you can purchase a Total Care Program (TCP) subscription from the Autel website or your tool supplier. Redeem the TCP card while logged into your pro.auteltech.com Autel user ID account and click on **Redeem** under **Account**.

UPDATE YOUR SOFTWARE

SYSTEM UPDATES



The tool must be connected to the internet to download and install updates. Confirm your tool is connected to your WiFi router.

- 1 - Turn on the MaxiSYS tablet.
- 2 - Tap the MaxiSYS icon on the screen or tap on the **M** icon at the bottom of the screen to navigate to the main menu.
- 3 - If updates are available, a red circle above the Update button will display the number of software updates ready to install.
- 4 - Tap the Update button to navigate to the update listing menu to choose which updates you want to install.

INSTALL UPDATES



Available downloads will display.

Make certain to download any system update listed. Tap Update tab to start the download. Only download the updates for vehicle manufacturer you service.

Tap only one or two updates at a time to ensure each update is correctly downloaded and installed. It is not advised to tap the Download All button.

A brief description of the update is displayed. Tap the **i** icon to view detailed info about that vehicle update including software fixes and special functions additions.

UPDATE THE VCI



Depending on your Maxisys unit, your VCI will either be silver or black. Using the supplied USB cable, attach the VCI to the Maxisys tablet. Tap the VCI icon on the bottom of the tablet display.

From the VCI manager screen, tap update on the right-hand side of the display. The tool will connect with the Autel server and display a **Update Now** button if an update is available. Tap **Update Now** and wait for the update to complete. Once completed, unplug the VCI from the tablet and VCI will reboot.

TROUBLESHOOTING

The MaxiSYS should automatically discover your Wifi connection. If this did not happen you can tap the Settings button, then tap the Systems Settings, then check the Wireless & Network setting. Ensure that WiFi is On.

TS608

COMPLETE TPMS & SERVICE TOOL COMBINATION

An industry first combination of complete TPMS and advanced service functions in a 7-inch tablet scan tool, equipped with the newest VCI mini for wireless communication. Complete repair projects faster with comprehensive TPMS, special service and all systems diagnostics in the same Android-based smooth navigation software as the rest of the MaxiSYS tool line. The MaxiTPMS TS608 provides the highest level of TPMS and service diagnostics setting new standards for service tools.



THREE TOOLS IN ONE

The innovative TS608 combination service tool provides three mode options from the main screen. This quicker tool navigation decreases repair time by providing easier and faster access to a wider variety of tool features, instead of switching between multiple specialty tools to complete projects.

COMPLETE TPMS
DIAGNOSTICS

SPECIAL SERVICE
FEATURES

ALL SYSTEMS
DIAGNOSTICS

BLUETOOTH MAXI-VCI MINI

Latest compact-size Wireless Bluetooth MaxiVCI Mini OBDII connector, transmits vehicle data to the tablet without a physical connection. Enhanced wireless bluetooth connectivity between the tablet and VCI device allows greater service mobility and easier TPMS sensor interaction while the tablet remains connected to the vehicle for data transmission.



AUTEL® MaxiTPMS™

WIRELESS BLUETOOTH OBDII CONNECTOR

MAXI TPMS - TS608



TPMS

- READ/ACTIVATE 315MHZ/ 433MHZ SENSORS
- ON-TOOL RELEARN PROCEDURES
- 4 MX-SENSOR PROGRAMMING OPTIONS
- ENHANCED TPMS STATUS SCREEN
- DETECT & DISPLAY TPMS SYSTEM FAULTS
- READ/ CLEAR OBDII CODES/ SENSOR INFO
- OBDII INTERFACE TO EXTRACT TPMS CODES
- ADJUST TIRE SIZE PLACARD VALUES

SERVICE

- TEST ABS/ SRS/ EPB/ DPF
- OIL & SERVICE RESETS/ BATTERY REGISTRATION
- SET INSPECTION 1&2 SERVICE INTERVALS
- EPB/SBC OPERATION/ CALIPER FUNCTIONALITY
- RESET STEERING ANGLE SENSORS (SAS)

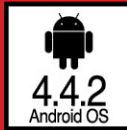
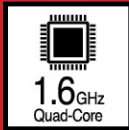
DIAGNOSTIC

- AUTOVIN / AUTOSCAN DETECTION
- READ/ CLEAR CODES FOR ALL MODULES
- VIEW & GRAPH LIVE DATA
- VIEW FREEZE FRAME DATA
- SUPPORTS ALL 10 OBDII TEST MODES
- TEST: O₂ MONITOR, ON-BOARD MONITOR, COMPONENT & I/M READINESS



\$995.00

COVERS DOMESTIC, ASIAN AND EUROPEAN VEHICLES (1996 TO PRESENT)



AUTEL.COM UPDATES PROVIDES THE LATEST TPMS COVERAGE AND DIAGNOSTICS

1 YEAR WARRANTY / 1 YEAR FREE SOFTWARE UPDATES

REGISTER AND UPDATE TOOLS UPON PURCHASE TO GUARANTEE LATEST VEHICLE COVERAGE

COMPLETE TPMS DIAGNOSTICS



- OBDII Connection To Read & Clear Codes
- Detect & Display TPMS System Faults
- Activate & Relearn All Known Sensors
- Read Sensor ID Info & Battery Power Level
- Sensor Position Relearn Assist Procedure

4 SENSOR PROGRAM OPTIONS

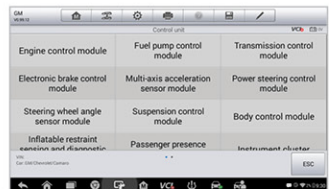
- Copy by Activation
- Copy by Manual Input
- Auto Create Multiple Sensors
- Copy by OBD

ADVANCED SERVICE FEATURES



- Control & Test ABS/ SRS/ EPB/ DPF Groups
- Diesel Particulate Filter Service
- Oil & Service Resets/ Battery Registration
- Set Inspection 1 & 2 Service Intervals
- View and Graph Live Data / View Freeze Frame
- Open & Close EPB Pads For Service
- EPB/SBC Operation / Caliper Functionality
- Reset Steering Angle Sensors (SAS)

ALL SYSTEMS DIAGNOSTICS



- Read & Clear Codes For All Module Systems
- Powertrain, Body, Chassis, Communication
- Supports All 10 OBDII Test Modes - Freeze Frame, Enhanced Mode 6, I/M Readiness, Vehicle Information & Component Tests
- Perform O₂ Monitor, On-Board Monitor, I/M Readiness and Component Testing

MAXICHECK

DIAGNOSTIC SERVICE TOOLS

MaxiCHECK service tools offer the most vehicle coverage and affordability for your repairs. Autel service tools provide easily followed on screen instruction to access all functions, read and clear vehicle codes and view live data. Whether your shop fixes transmissions or brakes, replaces fenders or mufflers, you can easily find a MaxiCHECK service tool that is the perfect combination of functions to service your individual specialized systems.



ADVANCED SERVICE TOOLS

The MD808P and MX808 are the most multifunctional scan tools offering more advanced service features and troubleshoot either the basic four systems or all systems. The wireless MaxiTPMS TS608 offers the same complete level service functions as the MaxiCHECK MX808, with added complete TPMS features.

SPECIALTY TOOLS

The OLS301 and EBS301 are based on Autel's latest diagnostic platform to make the navigation simple and easy to use so the technician can provide quick and easy solutions to everyday tasks in the workshop that cannot be completed without the use of a diagnostic tool.

AUTEL® MaxiCheck™

FEATURES COMPARISON CHART

MAXITPMS TS608



TPMS

- READ/ACTIVATE 315MHZ/433MHZ SENSORS
- ON-TOOL RELEARN PROCEDURES
- 4 MX-SENSOR PROGRAMMING OPTIONS
- ENHANCED TPMS STATUS SCREEN
- DETECT & DISPLAY TPMS SYSTEM FAULTS
- READ/ CLEAR OBDII CODES/ SENSOR INFO
- OBDII INTERFACE TO EXTRACT TPMS CODES
- ADJUST TIRE SIZE PLACARD VALUES

SERVICE

- TEST ABS/ SRS/ EPB/ DPF
- OIL & SERVICE RESETS/ BATTERY REGISTRATION
- SET INSPECTION 1&2 SERVICE INTERVALS
- VIEW & GRAPH LIVE DATA
- VIEW FREEZE FRAME DATA
- DIAGNOSE EPB/SBC CALIPER FUNCTIONALITY
- OPEN & CLOSE EPB
- RESET STEERING ANGLE SENSORS (SAS)

\$995.00



DIAGNOSTIC

- AUTOVIN / AUTOSCAN DTC DETECTION
- READ/ CLEAR CODES FOR ALL MODULES
- SUPPORTS ALL 10 OBDII TEST MODES
- O₂ MONITOR, ON-BOARD MONITOR, COMPONENT & I/M READINESS

MAXICHECK MX808



- AUTOVIN / AUTOSCAN DTC DETECTION
- READ/ TEST/ CLEAR DTC FOR ALL AVAILABLE MODULES
- GRAPH/ RECORD/ PLAYBACK LIVE DATA
- VIEW FREEZE FRAME DATA
- SUPPORT OBDII PROTOCOLS & TEST MODES
- OLS/ EPB/ SBC/ SAS/ BMS/ DPF/ IMMO
- SET INSPECTION 1&2 SERVICE INTERVALS
- I/M READINESS & COMPONENT TESTING
- SHOP MANAGEMENT / MAXISYS APPLICATIONS

\$559.00



MAXIDIAG MD808P



- AUTOSCAN DTC DETECTION
- READ/ TEST/ CLEAR DTC FOR MODULES
- FREEZE FRAME & LIVE DATA
- SUPPORT OBDII PROTOCOLS & TEST MODES
- OLS/ EPB/ SBC/ SAS/ BMS/ DPF
- SET INSPECTION 1&2 SERVICE INTERVALS
- I/M READINESS & COMPONENT TESTING
- BATTERY RESET / REGISTRATION
- THROTTLE CALIBRATION

\$339.00



MAXISERVICE - EBS301 / OLS301



- COVERS DOMESTIC, ASIAN & EUROPEAN VEHICLE MANUFACTURERS (1996 TO PRESENT)

EBS301

- OPENS & CLOSES BRAKE CALIPERS
- READS & CLEARS EPB/ SBC TROUBLE CODES
- EPB/ SBC CALIPER DIAGNOSTICS
- TURNS OFF ECU & BRAKE WARNING LIGHTS
- RESET BRAKE PADS

\$235.00

OLS301

- RESETS OIL SERVICE LIGHT
- RESETS INSPECTION SERVICE MILEAGE
- SETS INSPECTION 1&2 SERVICE INTERVALS

\$195.00



COVERS DOMESTIC, ASIAN AND EUROPEAN VEHICLES

AUTEL.COM UPDATES PROVIDES THE LATEST TPMS COVERAGE AND DIAGNOSTICS

TS608 & MX808 / 1 YEAR FREE SOFTWARE UPDATES

REGISTER AND UPDATE TOOLS UPON PURCHASE TO GUARANTEE LATEST VEHICLE COVERAGE

MD808 PRO

MAXIDIAG PRO SCAN TOOL

The MaxiDIAG MD808 Pro is the most affordable service and professional scan tool. This 2-in-1 combination tool allows for the convenient ability to read codes and scan vehicle modules.



FEATURES

- Read/ Test/ Clear trouble codes in ALL Systems: **ABS, SRS, ENGINE, TRANSMISSION +**
- Auto Scan all major systems
- Live Data to test individual systems
- Communicate with door modules, body controllers, electronic modules
- Support all OBDII protocols and 10 test modes including Freeze Frame, Enhanced Mode 6, Vehicle Info, I/M Readiness, On-Board Monitor and Component Tests
- Graph, record and playback freeze frame data
- Read and clear trouble codes, control and test BMS / EPB / SAS/ Oil Light Reset I DPF systems
- Diesel particulate/ including forced regeneration
- Reset steering angle sensor (SAS) functionality
- Reset oil service and battery registration
- Resets Battery Monitoring System
- Reset service mileage and service intervals
- Perform OLS / oil service resets
- Set inspection 1 & 2 service intervals
- Opens and closes EPB (electronic brake calipers) for pad removal and service
- Read and clear EPB/SBC trouble codes
- Diagnose EPB/SBC (Sensotronic Brake Control) caliper functionality with bi-directional control
- Perform O2 monitor, on-board monitor, I/M readiness and component testing




**AFFORDABLE
SERVICE
FUNCTIONS**


**ALL
SYSTEMS
DIAGNOSTICS**

ADDED DIAGNOSTIC FEATURES

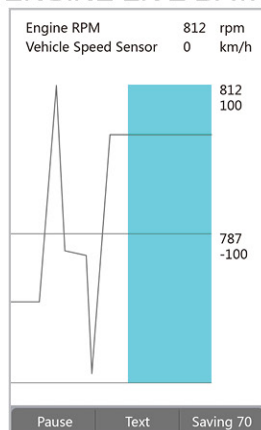
DPF SERVICE

Regeneration of diesel particulate filter w			
Engine speed	4	1/min	
Current injection quantity	0.39	mg/hub	
Air mass	0.00	mg/hub	
Coolant temperature	288	°F	
Total distance at last correction of ash	0	miles	
OK			

BATTERY RESET

Power supply(Battery)	
1	Battery
2	Close-circuit current
3	Activate rest state
4	Charging the battery via diagnostic socket
5	Auxiliary battery (24 V EPS): Register battery replacement

ENGINE LIVE DATA



MX808

MAXICHECK PRO SERVICE TOOL

The MaxiCHECK MX808 is the most affordable android based 7-inch tablet service tool. Choose the Advanced Service or All-Systems Diagnostic modes from the main screen. Easily AutoVIN then AutoSCAN the vehicle to accurately diagnose your repairs. Shop management, remote support and MaxiFIX benefits from the MaxiSYS applications, allow you to easily perform pre-scan and post-scan reports.



FEATURES

- Read/ Test/ Clear trouble codes on all available modules:
POWERTRAIN SYSTEM, BODY SYSTEM, CHASSIS SYSTEM, INFO & COMMUNICATION +
- Auto VIN Detection and Auto Scan all major systems
- Live Data to test individual systems and graph, record, playback freeze frame data
- Communicate with door modules, body controllers, electronic modules
- Support all OBDII protocols and 10 test modes
- Control and test BMS / EPB / SAS / Oil Light Reset / DPF systems
- Diesel particulate / including forced regeneration
- Reset steering angle sensor (SAS) functionality, battery registration, BMS
- Perform OLS / oil service resets and set inspection 1 & 2 service intervals
- Opens and closes EPB (electronic brake calipers) for pad removal and service
- Read and clear EPB/SBC trouble codes and Diagnose EPB/SBC caliper functionality with bi-directional control
- Perform O2 monitor, on-board monitor, I/M readiness and component testing

DIAGNOSTIC FEATURES



AUTOLINK

AFFORDABLE SERVICE TOOLS

The AutoLINK scan tools are the ideal affordable diagnostic service tools for technicians to get to the root problems quickly and accurately and identify the needed fixes. These tools offer easily followed onscreen instruction to access all functions, read and clear vehicle codes and view live data. Autel.com software updates provide the latest diagnostic coverage and OE learning procedures.



PERSONAL USER

The AutoLINK scan tools provide DIY users with multiple skill levels, to easily verify repairs and road test, then check State Emission Monitor Status and solve basic engine and driveability problems. Featuring the unique patented One-Click Readiness Key, the full line of scan tools easily determine the cause of the Check Engine Light (MIL) then clears codes and resets the monitors.

PROFESSIONAL USER

Designed to provide the advanced technician an affordable service tool to quickly and accurately diagnose the required service. AutoLINK tools offer thousands of troubleshooter code tips to help technicians save diagnosis and repair time and create a more efficient and profitable project. Easily decide which service tool is the perfect combination of functions to service your individual specialized systems.

AUTEL® AutoLink®

FEATURES COMPARISON CHART

CODE READER WITH ABS AND SRS COVERAGE

AL609P / AL629

- COVERS ALL DOMESTIC, ASIAN AND EUROPEAN VEHICLE MANUFACTURERS (1996 TO PRESENT)
- AUTO VIN FOR QUICK DTC DEFINITIONS
- READ/ ERASE DTCs FOR ABS/ SRS/ ENGINE
- I/M EMISSIONS READINESS
- GRAPH, RECORD & PLAYBACK LIVE DATA
- DISPLAY FREEZE FRAME DATA
- SUPPORT ALL 10 OBDII TEST MODES
- ENHANCED MODE 6 DIAGNOSTICS
- TESTS: O₂ MONITOR, ON-BOARD MONITOR, COMPONENT & OXYGEN SENSOR
- AL629: READ/ ERASE DTCs FOR TRANSMISSION



AL609P \$129.95 AL629 \$199.95



AL609P

AL629

CODE READER & ELECTRICAL TESTING TOOLS

AL439 / AL539

- COVERS ALL DOMESTIC, ASIAN AND EUROPEAN VEHICLE MANUFACTURERS (1996 TO PRESENT)
- READ & ERASE CODES
- SUPPORT ALL 10 OBDII TEST MODES
- ONE CLICK I/M READINESS/ LED INDICATOR
- DISPLAYS FREEZE FRAME & LIVE DATA
- TESTS STARTING, CIRCUIT, VOLTAGE & CHARGING SYSTEMS
- AL439: TESTS RESISTANCE
- AL539: TESTS CONTINUITY & CURRENT



AL439 \$149.95 AL539 \$189.95



AL439

AL539

AL529 / AL529HD

- COVERS DOMESTIC, ASIAN AND EUROPEAN VEHICLE MANUFACTURERS (1996 TO PRESENT)
- AUTO VIN FOR QUICK DTC DEFINITIONS
- READ/ ERASE DTCs FOR ENGINE
- READ ENHANCED POWERTRAIN SYSTEM CODES ON GM/FORD/CHRYSLER
- ONE CLICK I/M READINESS/ LED INDICATOR
- GRAPH/ RECORD & PLAYBACK LIVE DATA
- DISPLAY FREEZE FRAME DATA
- SUPPORT ALL 10 OBDII TEST MODES
- ENHANCED MODE 6 DIAGNOSTICS
- TESTS O₂ MONITOR, ON-BOARD MONITOR, COMPONENT & OXYGEN SENSOR
- AL529HD: SUPPORTS J1939 & J1708 HD PROTOCOLS & READ/ ERASE HEAVY DUTY ENGINE DTCs



AL529 \$129.95

AL529HD \$199.95



AL529

AL529HD

AL329

- COVERS DOMESTIC, ASIAN AND EUROPEAN VEHICLE MANUFACTURERS (1996 TO PRESENT)
- AUTO VIN FOR QUICK DTC DEFINITIONS
- READ/ ERASE DTCs FOR ENGINE
- ONE CLICK I/M READINESS/ LED INDICATOR
- DISPLAY LIVE & FREEZE FRAME DATA
- SUPPORT ALL 10 OBDII TEST MODES



\$49.95



READ & ERASE CODES / DISPLAY FREEZE FRAME DATA ON DOMESTIC, ASIAN AND EUROPEAN VEHICLES 1996 AND NEWER



DOWNLOAD FREE SOFTWARE UPDATES

AL629

AFFORDABLE CODE READER

Autel's affordable and easy to use code reader now provides Auto VIN with DTC Lookup, display freeze frame data and live data on this enhanced service tool.



DIAGNOSTIC FEATURES

- Auto VIN for Quick DTC Definitions
- ★ Read & Erase DTCs for ABS
- ★ Read & Erase DTCs for SRS
- ★ Read & Erase DTCs for ENGINE
- ★ Read & Erase DTCs for TRANSMISSION
- Retrieve Vehicle Information (VIN, CIN, CVN)
- I/M Emissions Readiness
- Graph, Record and Playback Live Data
- Display Live and Freeze Frame Data
- Support All 10 Test Modes of Latest J1979 OBDII
- Enhanced Mode 6 Diagnostics
- O2 Monitor Test / On-Board Monitor Test
- Component Test / Oxygen Sensor Test
- Print Data Via PC / Internet Update / Multi-Lingual

★ ADDED FEATURES



DTC LOOKUP WITH CODE BREAKER

DTC LOOKUP

DTC Lookup	
P0001	
←	Left
→	Right
↑ ↓	Change Digit
OK	Confirm
ESC	Exit

SEARCH FOR YOUR DIAGNOSTIC TROUBLE CODE

AUTO VIN

AUTO VIN	
P0021	1/1
\$07E8 Generic	
=====	
A Camshaft Position Timing	
Over - Advanced or System	
Performance Bank 2	

AUTO VIN FOR QUICK DTC DEFINITIONS

TEST MODES

Code Breaker	
System Description	
Quick Check	
General Notes	

SEARCH DTC DEFINITION LIBRARY FOR CODE BREAKER INFORMATION

DIAGNOSTIC FEATURES

FREEZE FRAME DATA

View Freeze Frame	1/76
DTC_CNT	127
DTCFRZF	U3FFF
FUELSYS1	OL
FUELSYS2	OL
LOAD_PCT(%)	100.0
ECT(°C)	-39
SHRTFT1(%)	-99.2

I/M EMISSIONS READINESS

I/M Readiness	1/1
1 Since DTCs cleared	
2 This driving cycle	

ON-BOARD MONITOR TESTING

On-Board Mon. Test	1/4
Enhanced Evaporative Emissio...	
O2 Sensor Heater System Time...	
Exhaust Gas Recirculation Sys...	
Catalyst Efficiency Monitor	

AL529HD

HEAVY DUTY CODE READER

The AutoLINK AL529HD is the most affordable and first Autel heavy duty code reader, professional and service scan tool. Supportive of J1939 and J1708 HD protocols with Deutsch-9 and Deutsch-6 adapters, can read and erase heavy duty codes, and display freeze frame data. The AL529HD is compatible with Domestic, Asian and European vehicles 1996 and newer.



FEATURES

- **Auto VIN for Quick DTC Definitions**
- Retrieve Vehicle Information (VIN, CIN, CVN)
- One Click I/M Emissions Readiness Key
- Graph, Record and Playback Live Data
- Display Live and Freeze Frame Data
- Support All 10 Test Modes of Latest J1979 OBDII
- Enhanced Mode 6 Diagnostics
- O2 Monitor Test / On-Board Monitor Test
- Component Test / Oxygen Sensor Test
- Read Specific Codes in Power System - GM / Ford / Chrysler
- Print Data Via PC / Internet Updateable / Multi-Lingual

QUICK KEY

LED INDICATOR LIGHTS

I/M Readiness			
MIL			
DTC		P01 DTC	
MIS		EVAP	
FUE		AIR	
CCM		O2S	
CAT		HRT	
HGAT		EGR	

ONE CLICK I/M
READINESS
KEY PERFORMS
TESTING ON ACTIVE
VEHICLE MONITORS
TO CONFIRM IF
DTCs ARE PRESENT

HEAVY DUTY CAPABILITY

- Supports J1939 and J1708 Heavy Duty Protocols
- Deutsch-9 and Deutsch-6 Adapters for Heavy Duty Vehicles



HEAVY DUTY

DIAGNOSTIC FEATURES

FREEZE FRAME DATA

View Freeze Frame	1/77
---FREEZ---	SPN 100
ENGINE TQ MODE	Other
EIM_1_PRES(kPa)	18
ENGINE SPEED(rpm)	0
CURRENT SPD_LOAD_PCT(%)	0
ECT(°C)	99
WHL-BASED VEH SPD(km/h)	0.0

EASY TO FOLLOW NAVIGATION

Diagnostic Menu	1/11
Read Codes	
Erase Codes	
Live Data	
View Freeze Frame	
I/M Readiness	
O2 Monitor Test	
On-Board Mon. Test	

ON-BOARD MONITOR TESTING

On-Board Mon. Test	1/4
Enhanced Evaporative Emissio...	
O2 Sensor Heater System Time...	
Exhaust Gas Recirculation Sys...	
Catalyst Efficiency Monitor	

MAXIVIDEO

DIGITAL INSPECTION SCOPES

The full line of multipurpose MaxiVIDEO digital inspection scopes are ideal for examining difficult to reach areas with its semi rigid shaft and powerful built in LED to illuminate those hard to see dark places. Each tool is an economical solution to inspect machinery, facilities and infrastructure in the safest, quickest and most cost-effective manner possible.



DIGITAL FILES

The Autel MaxiVIDEO digital inspection scopes feature the ability to record either still images or video segments or offer the capability to stream digital video directly to your computer with the supplied USB cable. These digital files can be stored on the video scope internal flash memory or the removeable Micro SD card (optional) or saved to a computer via the mini USB connector.

VIEWING FEATURES

These ergonomic and easy to use digital inspection scopes feature an auto focus and 5x digital zoom for increased viewing options while operating in small areas. The camera heads offer durable safety with the oil and scratch resistant tempered glass lens allowing a viewing distance as close as 1 inch with crystal clear output.

REPLACEMENT HEADS: (MSRP-US\$)

Two size replacement camera heads with flexible cable. Compatible with all Autel MaxiVIDEO tools.

MVIHC85 - 8.5MM IMAGER



MVIHC55 - 5.5MM IMAGER



AUTEL® MaxiVideo®

FEATURES COMPARISON CHART



MV400-55

- 5X DIGITAL ZOOM/VIEW AS CLOSE AS 1-INCH
- RECORD/PLAYBACK IMAGES & VIDEO
- IMAGE HEAD- OIL/ SCRATCH RESISTANT GLASS
- 1 METER (39.4-IN) FLEXIBLE WATERTIGHT SHAFT
- BUILT-IN LED TO ILLUMINATE INSPECTION AREA
- JPG IMAGES 640X480, AVI VIDEOS 320X240
- ON-SCREEN HORIZONTAL/ VERTICAL REVERSE
- **5.5mm CAMERA HEAD (MAGNET, MIRROR, HOOK)**

\$199.95



MV208-55 / MV208-85

- 5X DIGITAL ZOOM/VIEW AS CLOSE AS 1-INCH
- RECORD/PLAYBACK IMAGES & VIDEO
- IMAGE HEAD- OIL/ SCRATCH RESISTANT GLASS
- 1 METER (39.4-IN) FLEXIBLE WATERTIGHT SHAFT
- BUILT-IN LED TO ILLUMINATE INSPECTION AREA
- JPG IMAGES 640X480, AVI VIDEOS 320X240
- ON-SCREEN HORIZONTAL/ VERTICAL REVERSE
- **8.5mm CAMERA HEAD (MAGNET, MIRROR, HOOK)**
- **5.5mm CAMERA HEAD (MAGNET, MIRROR)**

\$159.95

\$139.95



RECORD / PLAYBACK / STORE DIGITAL FILES
IMAGE STILLS (JPG 640X480) OR VIDEOS (AVI 320X240)



MV400-55



MV208-55/-85



MV400-55
MV208-55



MV208-85



MV400-55
MV208-85



MV208-55



MV105

- 3M (10-FT) FLEXIBLE/ WATERPROOF HEAD/ CABLE
- 1M (3.28-FT) IMAGER HEAD & CABLE REACH
- ADJUSTABLE LED LIT CAMERA 320X240
- IMAGE STILLS OR VIDEO • USB COMPATIBLE
- COMPATIBLE WITH MAXISYS TOOLS & PC
- VIEWING DISTANCE: 0.95-30CM/
3/8-12-INCH

\$159.00



MV108

- 3M (10-FT) FLEXIBLE/ WATERPROOF HEAD/ CABLE
- 1M (3.28-FT) IMAGER HEAD & CABLE REACH
- ADJUSTABLE LED LIT CAMERA 640X480
- IMAGE STILLS OR VIDEO • USB COMPATIBLE
- COMPATIBLE WITH MAXISYS TOOLS & PC
- VIEWING DISTANCE: 2.54-35.56CM/
1-14-INCH

\$139.00



IMAGE STILLS (JPG 640X480) OR VIDEOS (AVI 320X240)



MV105



MV105



MV108



MV108

AUTEL[®]

AUTOMOTIVE INTELLIGENCE

MAXISYS[™] MaxiTPMS[™] MaxiCheck[™] AutoLink[™] MaxiVideo[™]

LIMITED WARRANTY

The Autel Limited Warranty covers all defects in workmanship or materials and normal wear items for the lifetime of the original, registered tool owner. Dated sales receipt or invoice must be provided to honor Autel warranty.

STANDARD POLICY

Autel warrants to the original end-user customer that its products are free from defects in material and workmanship for a specified period of time depending on product. Autel, will at its discretion, either repair or replace warranted products. Replaced products will either be new or recertified. All recertified products will be tested to ensure their hardware and software are functionally equivalent to new products. Do not open Autel products. Opening an Autel product may cause damage to the tool that is not covered by this limited warranty. Only Autel should service Autel tools. This limited warranty covers only repair or replacement of Autel products, it does not cover any damages or losses of any kind resulting from use or misuse of product.

The limited warranty covers only device failure. It does not cover any damage to the product (including but not limited to cracked screen, broken case, chemical exposure or liquid damage) as a result of accident, abuse, misuse, natural disaster, insufficient or excessive electrical supply, abnormal mechanical or environmental conditions or unauthorized disassembly, repair or modification. This warranty does not apply to consumable parts, such as batteries or protective coatings that are designed to diminish over time, unless failure has occurred due to a defect in materials or workmanship. This limited warranty shall not apply if the product was not used in accordance with accompanying instructions or intended use. This limited warranty does not apply to any product with an altered or removed original identification number or if Autel receives information from relevant public authorities that the product has been stolen.

There is no service charge if the tool is covered under the limited warranty or if the warranty has been extended under the Autel Total Care Program (TCP). Refer to the Autel MaxiSYS Support page for details on replacement part coverage under initial year warranty and TCP extended warranty. Autel can replace batteries on out-of-warranty tools for a service fee. Contact Autel Technical Support to request a Return Goods Authorization (RGA) number to send the tool for battery replacement.

SERVICE PROCEDURE

A defective product may be returned to Autel only after obtaining a Return Goods Authorization (RGA) number from Autel. If any customer has questions or believes it necessary to return the tool for repair, contact your local distributor or Autel technical support to obtain an RGA number and instructions to send the tool to an Autel RGA department for service. The end-user is responsible for the cost of insuring and shipping to Autel. Tools must be properly packaged to prevent damage during transit. Autel will cover shipping cost of the repaired or replacement tool with the same delivery speed by which it was sent in to Autel. The Autel RGA number must be prominently displayed on the outside of the package. Shipments received by Autel without the RGA number prominently displayed on the package exterior will be returned unopened. Autel can not guarantee the security of a unit that is shipped without an Autel-issued RGA.

LIMITED WARRANTY

The MaxiSYS Elite is covered under the Autel Limited Warranty for TWO (2) YEARS from date of tool registration.

The following tools and accessories are covered under the Autel Limited Warranty for ONE (1) YEAR from date of tool purchase.

- | | | | |
|-------------------------|----------------------|----------------------|-------------------|
| • MaxiSYS MS906BT | • TPMS TS608 | • AutoLINK AL609 PRO | • MaxiVIDEO MV400 |
| • MaxiSYS MS906TS | • MaxiCHECK MX808 | • AutoLINK AL529HD | • MaxiVIDEO MV208 |
| • MaxiSYS MS908 | • MaxiDIAG MD808 PRO | • AutoLINK AL529 | • MaxiVIDEO MV105 |
| • MaxiSYS MS908 PRO | • MaxiSERVICE EBS301 | • AutoLINK AL329 | • MaxiVIDEO MV108 |
| • MaxiSYS MS908CV | • MaxiSERVICE OLS301 | • AutoLINK AL439 | |
| • MaxiFLASH Elite J2534 | • AutoLINK AL629 | • AutoLINK AL539 | |

FREE SOFTWARE UPDATES

The MaxiSYS Elite is eligible for free software updates for TWO (2) YEARS from date of tool registration.

The following tools are eligible for free software updates for ONE (1) YEAR from date of tool registration.

- | | | | |
|-------------------|-------------------------|-------------------|-------------------|
| • MaxiSYS MS906 | • MaxiSYS MS908 PRO | • TPMS TS608 | • MaxiVIDEO MV105 |
| • MaxiSYS MS906TS | • MaxiSYS MS908CV | • MaxiVIDEO MV400 | • MaxiVIDEO MV108 |
| • MaxiSYS MS908 | • MaxiFLASH Elite J2534 | • MaxiVIDEO MV208 | |

The following tools are eligible for free software updates for the LIFETIME OF THE TOOL from date of tool registration.

- | | | | |
|----------------------|----------------------|--------------------|------------------|
| • MaxiCHECK MX808 | • MaxiSERVICE OLS301 | • AutoLINK AL529HD | • AutoLINK AL439 |
| • MaxiDIAG MD808 PRO | • AutoLINK AL629 | • AutoLINK AL529 | • AutoLINK AL539 |
| • MaxiSERVICE EBS301 | • AutoLINK AL609 PRO | • AutoLINK AL329 | |

Refer to the Autel Update Instructions for details on how to register your tool or contact technical support. Refer to the Autel MaxiSYS Support page for details on purchasing an additional one-year Total Care Program (TCP) card for a more cost effective replacement coverage of damaged MaxiSYS tools after the initial warranty year expires)

Autel North America
Email: ussupport@autel.com
175 Central Ave, Suite 200,
Farmingdale, NY 11735
United States

Autel South America
Email: latinsupport@autel.com
Office 103, Building 3845,
International Business Park,
Veracruz, Panamá Pacífico, Panamá

Autel China HQ
Email: support@autel.com
6th-10th floor, Bldg. B1, Zhiyuan,
1001 Xueyuan Rd, Xili, Nanshan,
Shenzhen, 518055, China

Autel Europe
Email: support.eu@autel.com
Robert-Bosch-Strasse 25
63225, Langen
Germany

Autel Australia
Email: sales@autel.com.au
155 Islington Street, Melbourne,
Collingwood, VIC 3066
Australia



www.maxitpms.com (855) 288-3587 www.autel.com

© 2017 Autel Intelligent Technology Corp., Ltd. All Rights Reserved
Tools must be registered and updated to be guaranteed the latest coverage.

